

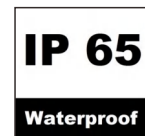
# LED CANOPY LIGHT

POWER / COLOUR ALL IN ONE

NEW  
TECHNOLOGY



Adjustable power  
Adjustable color temperature



## 1 KEY FEATURES

- 1.High efficiency UL Certification Driver.Separate design of the lamp driver, the driver module can be placed far away from the lamp body.
- 2.Imported original CREE XTE or Lumileds 3030 LED Chip.
- 3.Variety of mounting options.
- 4.The surface of lamp housing is anti-corrosion and electrophoresis processed.
- 5.Dust-proof,moisture proof and waterproof ,IP65 rated.
- 6.Excellent optics design,higher luminous efficiency.uniform light spot, high efficiency, low glare.
- 7.Compare to traditional lamps can save energy 70%-80%.
- 8.Easy & quick Installation.
- 9.Adjustable power 80W/100W/120W/150W ;120W/160W/200W/240W,  
Adjustable color temperature all in one.

## 2 > SPECIFICATIONS

Power	80W/100W/120W/150W 4in1	120W/160W/200W/240W 4in1
Model	BB-CSD-4IN1-C1A	BB-CSD-4IN1-C1B
Luminous Flux	80W=10400lm 100W=13000lm	120W=15600lm 150W=17250lm
Replacement	80W=HPS 250W 100W=HPS 300W	120W=HPS 350W 150W=HPS 400W
Cover	Glass cover	
Light Source	SMD LED	
Luminous Efficacy	130lm/W (When the light power is turned on to the maximum, the light effect will be reduced to 115 lm/w)	
Operation Temp.	-40 to +45°C	
CCT	3000K/4000K/5000K All in one, Options:4000K/5000K/5700K	
CRI	>80	
With Sensor	Daily sensor	
Life Span	50,000 hours at 25°C	
Voltage	100-277VAC/50-60Hz 200-480VAC/50-60Hz available	
Driver	UL listed power supply	
Beam Angle	120°	
PF	>0.95	
IP	65	
Warranty	5 Years	

### Ordering Information

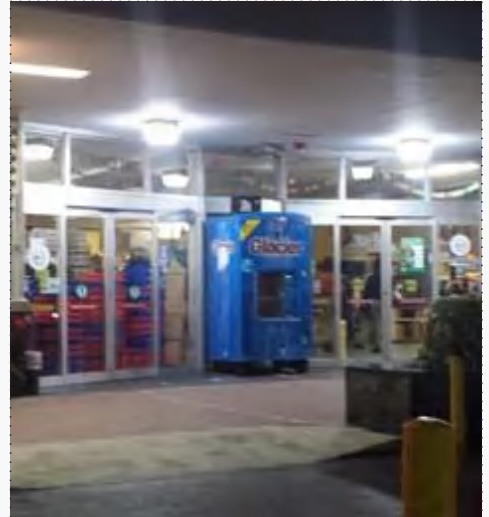
Area Series	Watts	Version	CCT	Voltage	Control	Cover	Color
<b>BB-CSD</b>	80/100/120/150W 120/160/200/240W	<b>4in1</b>	<b>Blank-</b> 3000K 4000K 5000K <b>Optional-</b> 4000K 5000K 5700K	<b>Blank-</b> 100-277VAC <b>HV-</b> 200-480VAC	<b>Blank -</b> Photocell Sensor	<b>Blank-</b> Glass	<b>Blank -</b> black <b>WH -</b> white <b>BR -</b> bronze

Notes:

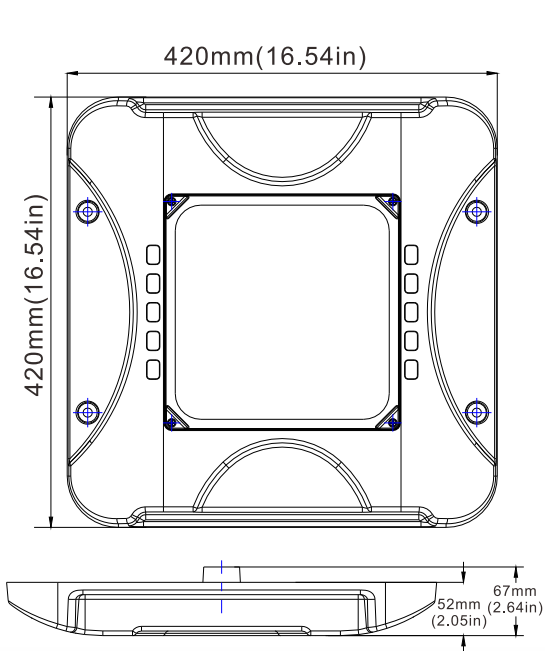
Special Order-Ask Customer Service

### 3 APPLICATION

- 1. Gas station lighting.
- 2. Petroleum canopies lighting.
- 3. CNG fueling stations lighting.
- 4. Low-medium bay general lighting.
- 5. Soffits lighting.
- 6. Garage lighting.

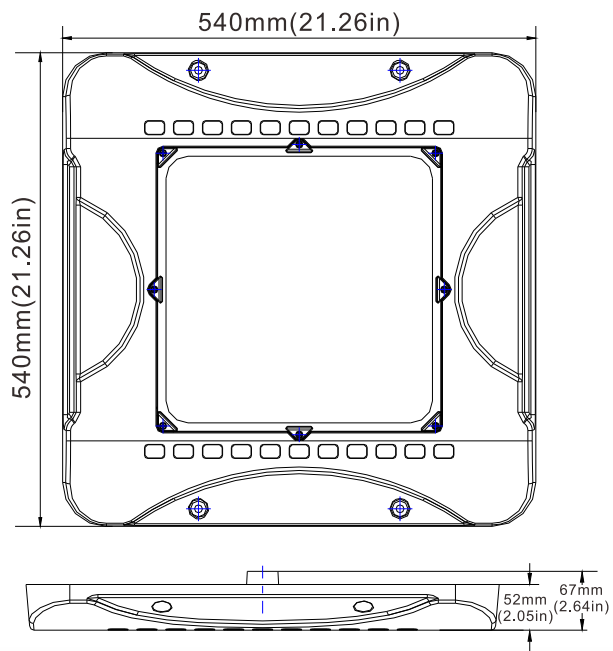


### 4 SIZE



80W/100W/120W/150W 4in1

[www.choierled.com](http://www.choierled.com)



120W/160W/200W/240W 4in1

Email: [sales@choierled.com](mailto:sales@choierled.com)

Tel: 913 804 1267

# Adjustable power, Adjustable color temperature controller instructions (manual operation)



Adjustable power and color temperature module

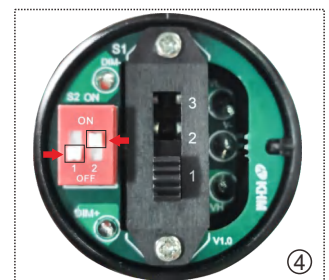
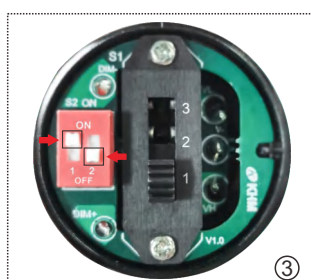
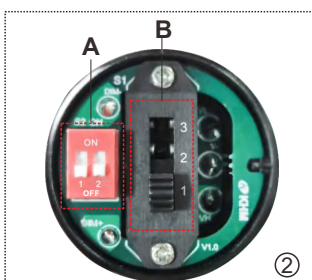
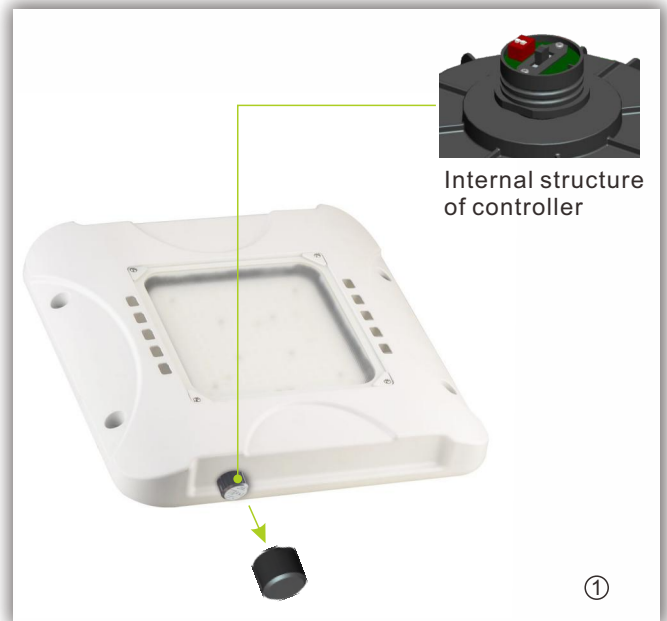
- Pull out the controller cover firmly upwards. See picture 1
- Adjust the power in zone A and adjust the color temperature in zone B. The factory default power is 150W and the color temperature is 5000K. See picture 2.

## Comparison table for adjusting the power (zone A):

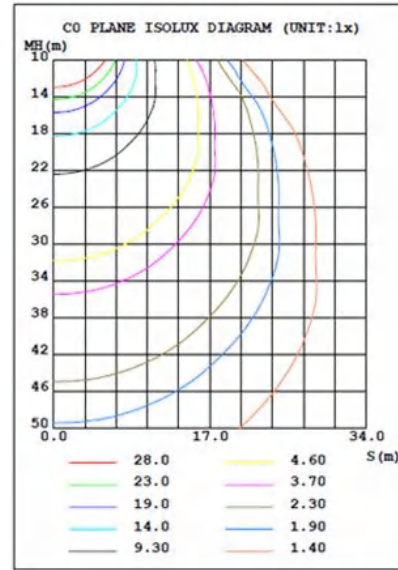
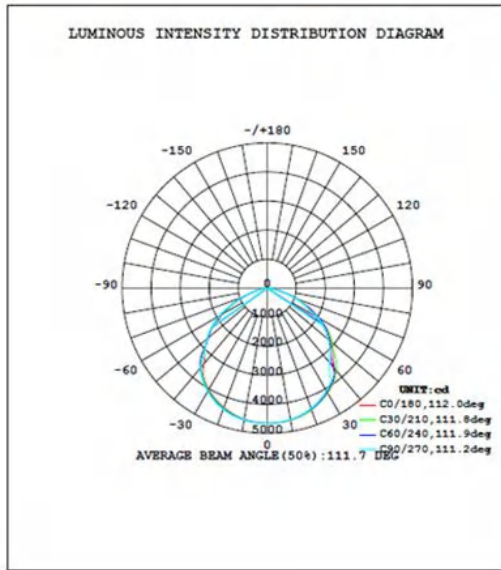
80W/100W/120W/150W			
150W=Pull A1 to OFF. Pull A2 to OFF. (picture 2.)	120W=Pull A1 to ON Pull A2 to OFF. (picture 3.)	100W=Pull A1 to OFF. Pull A2 to ON (picture 4.)	80W= Pull A1 to ON Pull A2 to ON
120W/160W/200W/240W			
240W=Pull A1 to OFF. Pull A2 to OFF. (picture 2.)	200W=Pull A1 to ON Pull A2 to OFF. (picture 3.)	160W=Pull A1 to OFF. Pull A2 to ON (picture 4.)	120W= Pull A1 to ON Pull A2 to ON

## Instructions for adjusting the color temperature (zone B):

3 gears adjustment: B3=3000K, B2=4000K, B1=5000K.  
The factory default is 5000K (B1). When adjusting the color temperature, just pull the button to the corresponding position.



## 5 IES TEST REPORT



## 6 PROJECTS

By using our 100W LED Light to replace 300W Metal Halide bulb for Gas Station lighting, the customer is now able to save a lot per month from his electric bill.



100W LED = 300W MH



### Note:

- Don't take the LED lamp apart.
- The LED lamp must work under the right voltage according to the specification.

**7 > PACKING INFO**



Packaging	Dimensions (L*W*H)	N.W	G.W	Volume weight
150W/200W 1pcs/Box	465*460*120mm	3.5kg	4.5kg	6.5kg
240W/300W 1pcs/Box	585*580*120mm	4.5kg	5.5kg	10.0kg